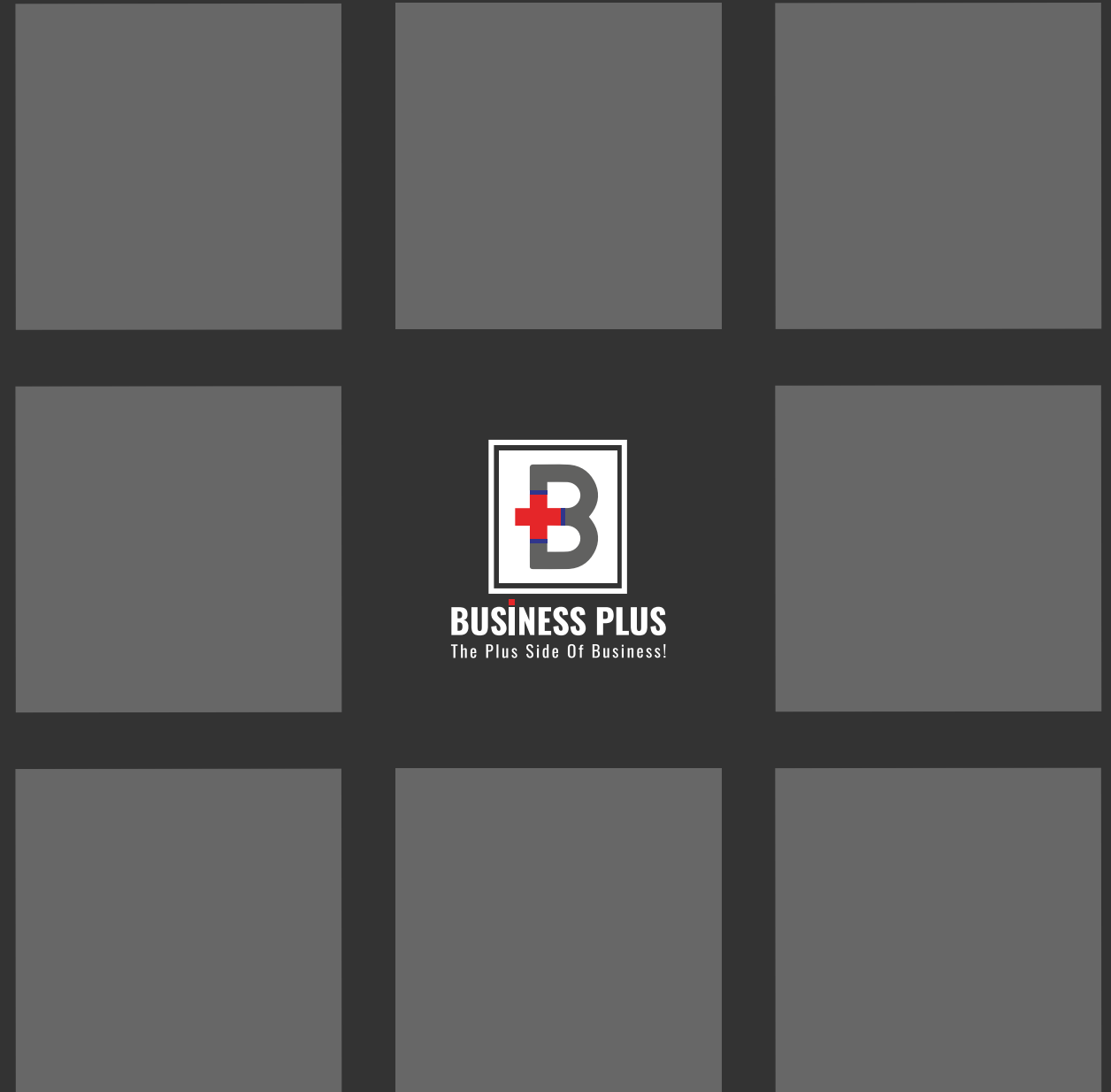


# Business Plus

A Name That Doctors &  
Professionals **Trust**

In Nashik's Esteemed  
Business Hub, **Mumbai Naka**





G+ 6  
Floors

Premium  
Amenities

Modern  
Infrastructure

600 to  
25000 Sq. Ft.  
Customizable  
Spaces

## **Our Prestigious Team**

**Land Owner:** Jaanmali Brothers

**Architect:** Ar. Sumit and Ar. Bansri Kumath

**Civil Contractor:** Fortune Constrotech LLP

**Structural Consultant:** Milind Rathi (Structures)

**MEP Consultant:** System Solution Pvt. Ltd. (Pune)

**Healthcare Consultant:** Hosconn Consulting (Dr Chimote)

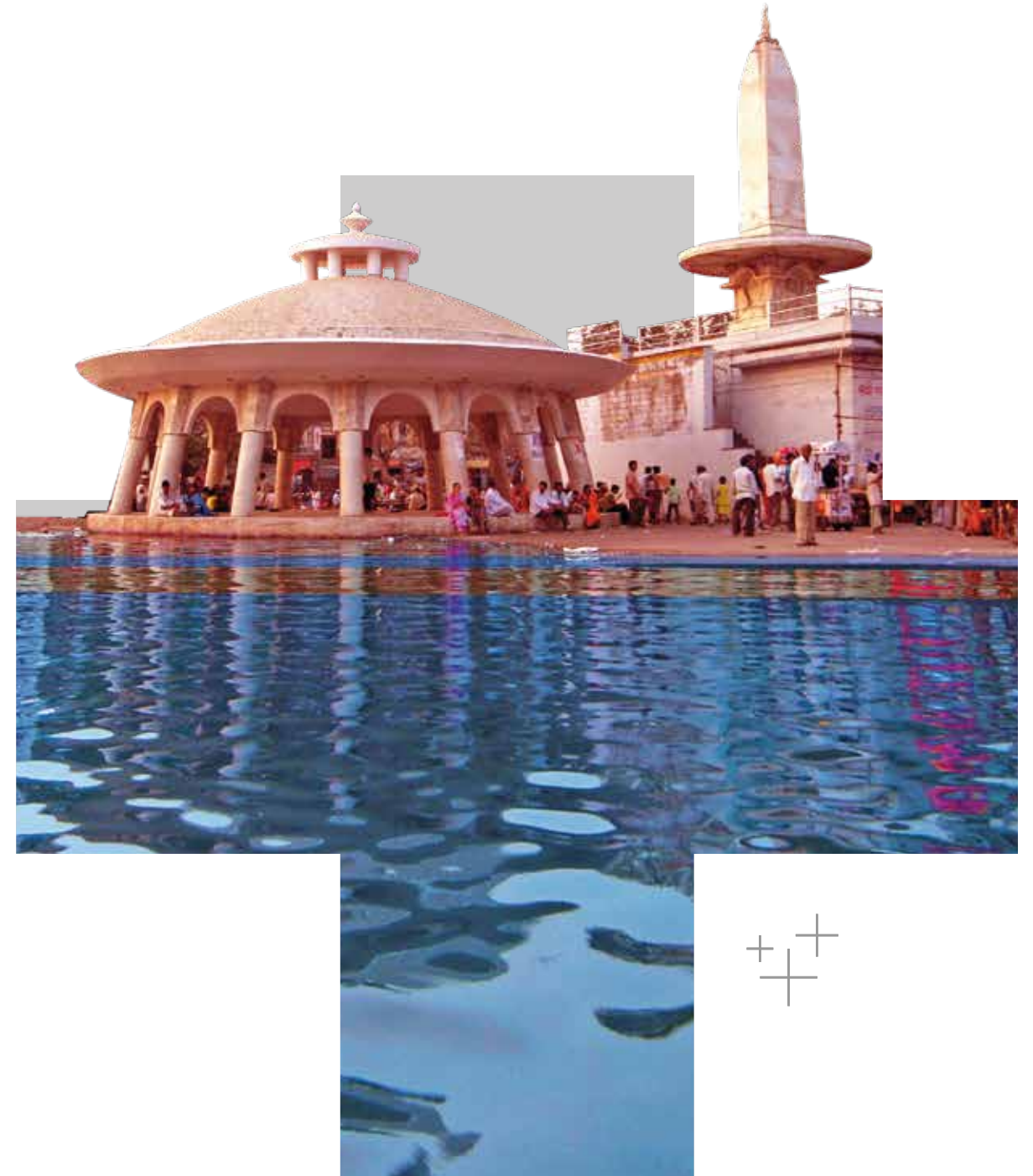
**Legal Advisor:** Adv.S.L Deshpande & Adv. U.L Deshpande



# About Nashik

**Nashik offers an enriching landscape to move from dreams to manifestation with relative ease.** Today's most inviting place for residence and commerce, here only you will find both luxury and comfort, that's why we say **Nashik Me Business Hoga to Business Plus Hi Hoga.**

- 🏠 4<sup>th</sup> largest city in Maharashtra
- 🎯 A focal point of the northern region of Maharashtra
- 📐 Part of A Golden Triangle project
- 🏢 Smart City
- 🎓 Education Hub
- 🏥 Medical Hub







# About Business Plus

**Business Plus provides you with exactly what you are looking for!**

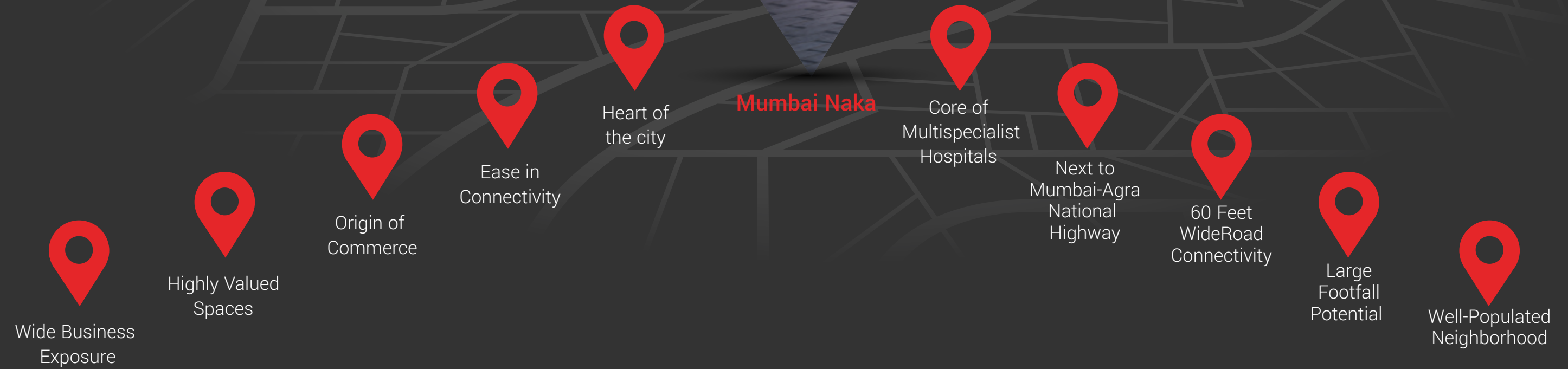
Planned at a prime location in Gaikwad Nagar, Mumbai Naka, it is a commercial project that brings great opportunities to every type of business.

Business Plus offers customized spaces with areas ranging from 600 sq. ft. to 25000 sq. ft. that suit your business requirements, along with several rich amenities. Just a right opportunity to succeed!

It is a commercial project by Mango Estate, a construction firm renowned for developing properties as per the market trend.



# Location Highlights



# Business Plus is Your Premium Choice

- 🏥 Clinics
- 🏥 Hospitals
- 🏥 Laboratories
- 🏥 Diagnostics Centers
- 🏥 Pharmaceuticals
- 🏥 Polyclinics
- 🏥 Institutes
- 🏥 Offices
- 🏥 Professional Services



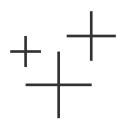




# Business Plus is Fully Equipped

- ⊕ Strategic Designs
- ⊕ Unique Elevation
- ⊕ Quality Construction
- ⊕ Dedicated Owner Parking
- ⊕ Multilevel Parking
- ⊕ Glass Facade
- ⊕ Stretcher Size Lifts
- ⊕ Well Maintained & Hygienic
- ⊕ 24/7 Security With CCTV Surveillance
- ⊕ 24-Hour Back-Up for Elevators
- ⊕ Electrified Units
- ⊕ Water Proofing
- ⊕ Paint Ready Units



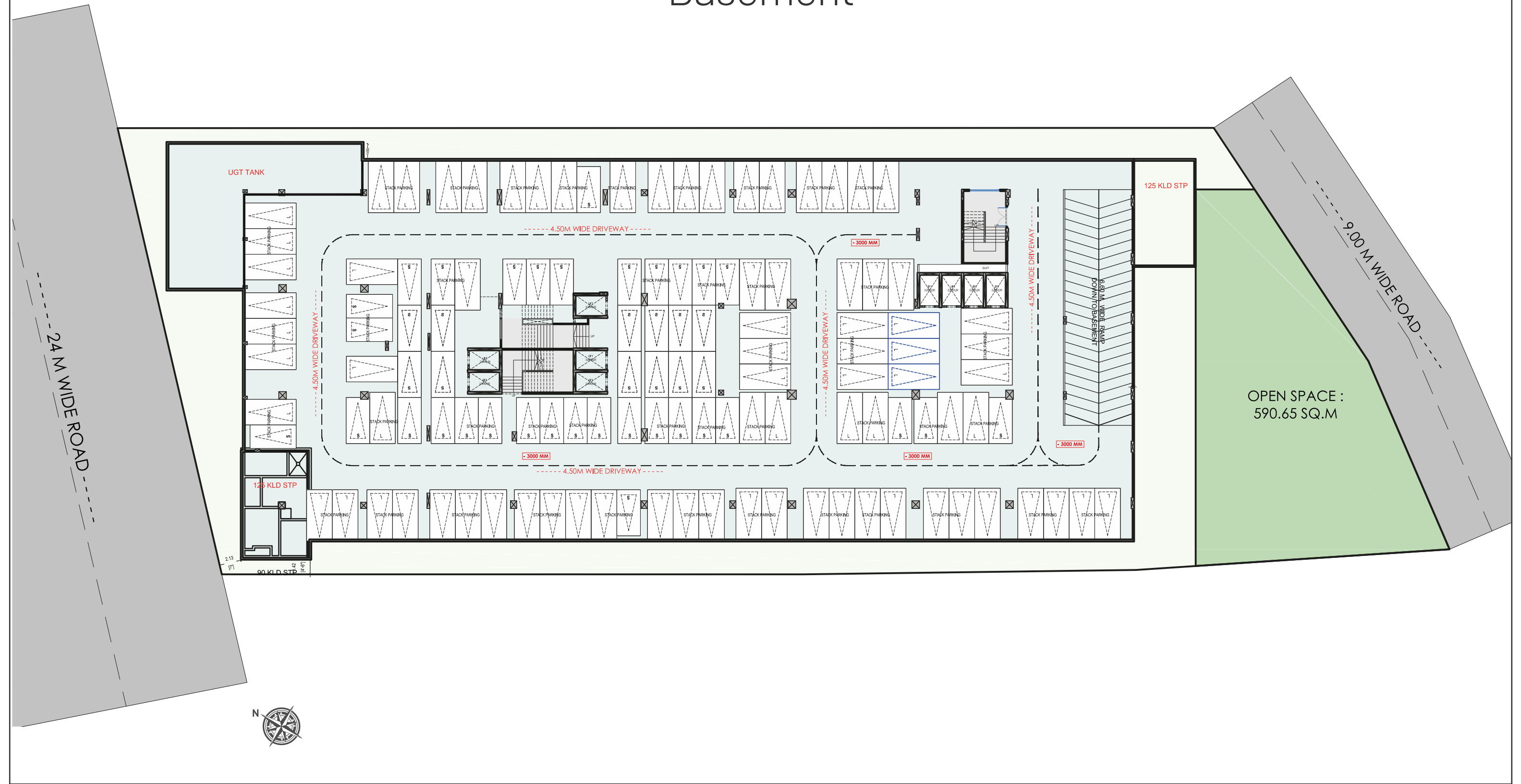


# Things you won't miss and things you won't find elsewhere

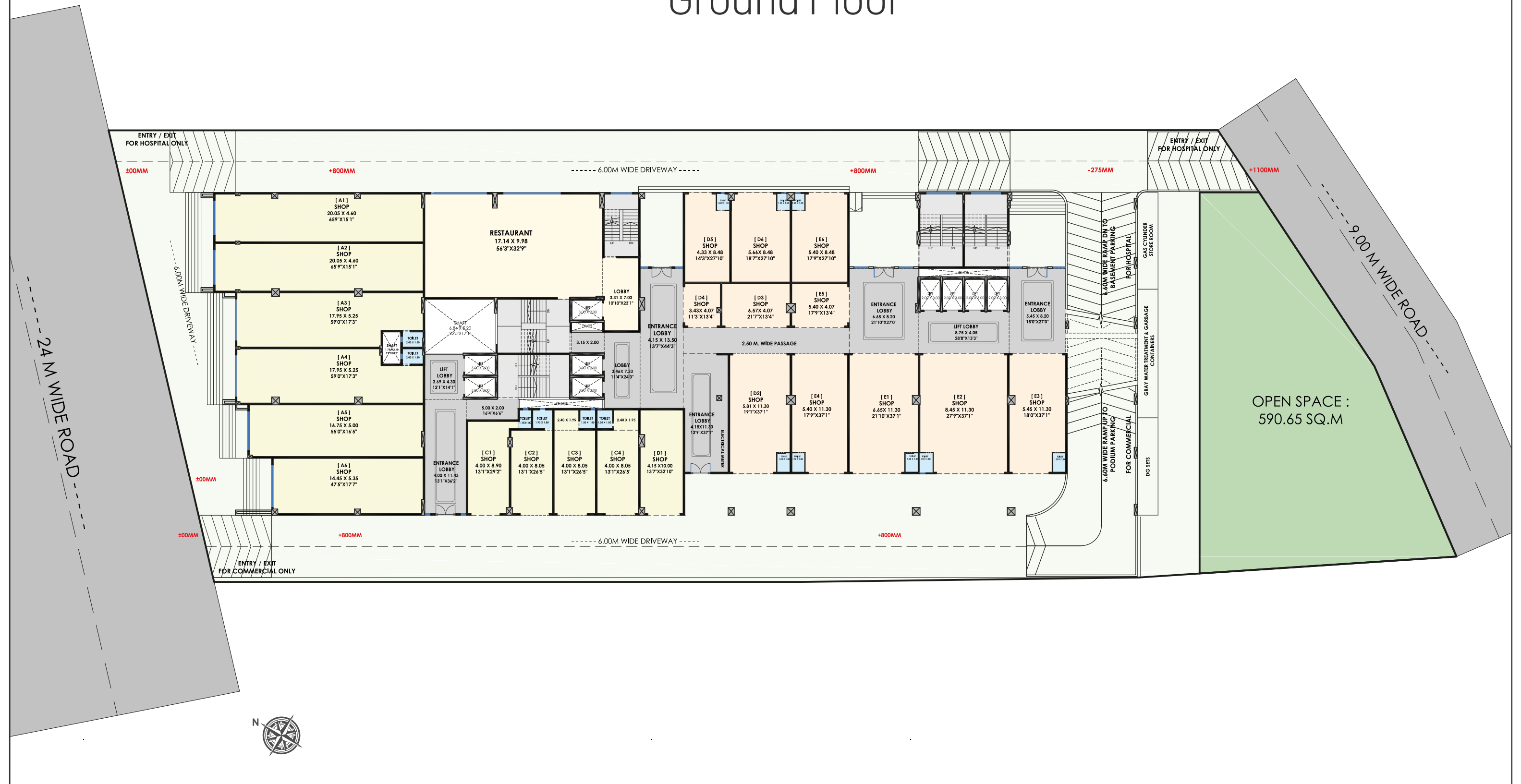
- ⊕ The last road-touch property at Mumbai Naka
- ⊕ Customizable Spaces
- ⊕ Business Hotspot Presence
- ⊕ Super-premium Quality Construction
- ⊕ Mumbai Naka's First Podium Parking



# Basement



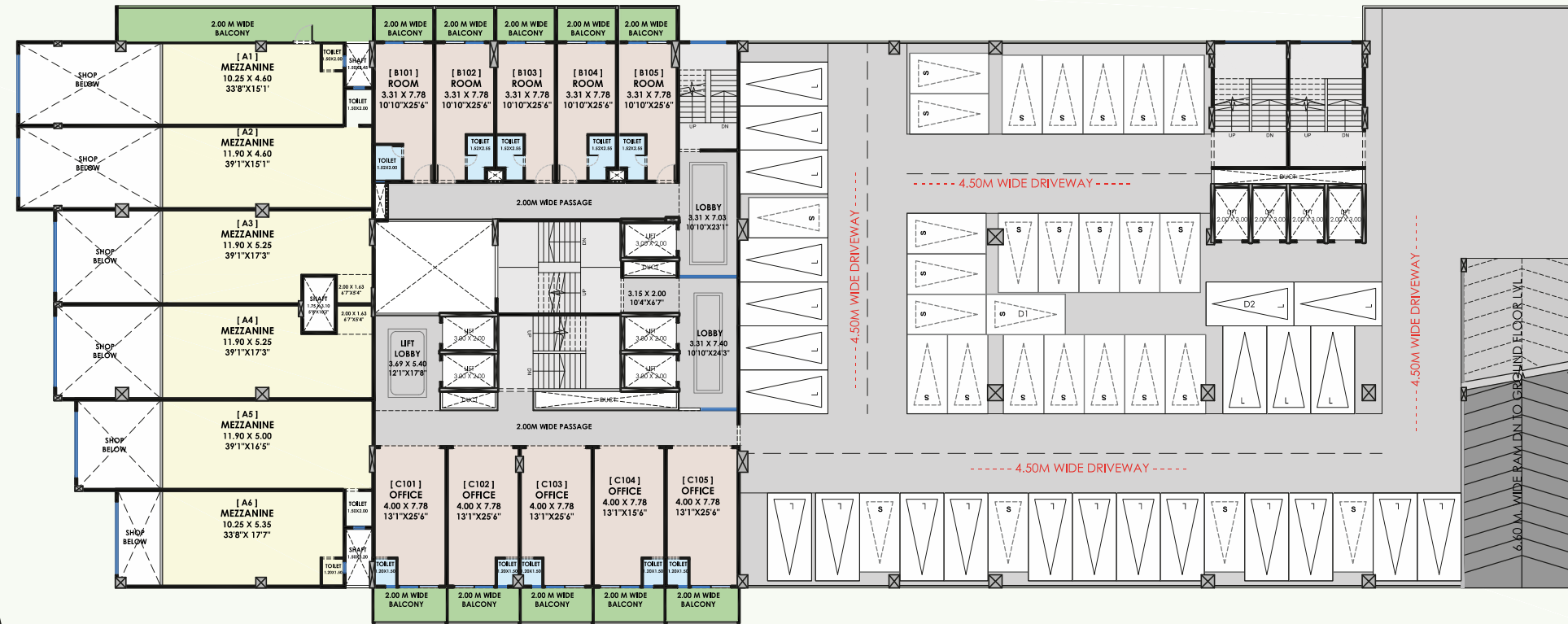
# Ground Floor



OPEN SPACE :  
590.65 SQ.M



# 1st Floor



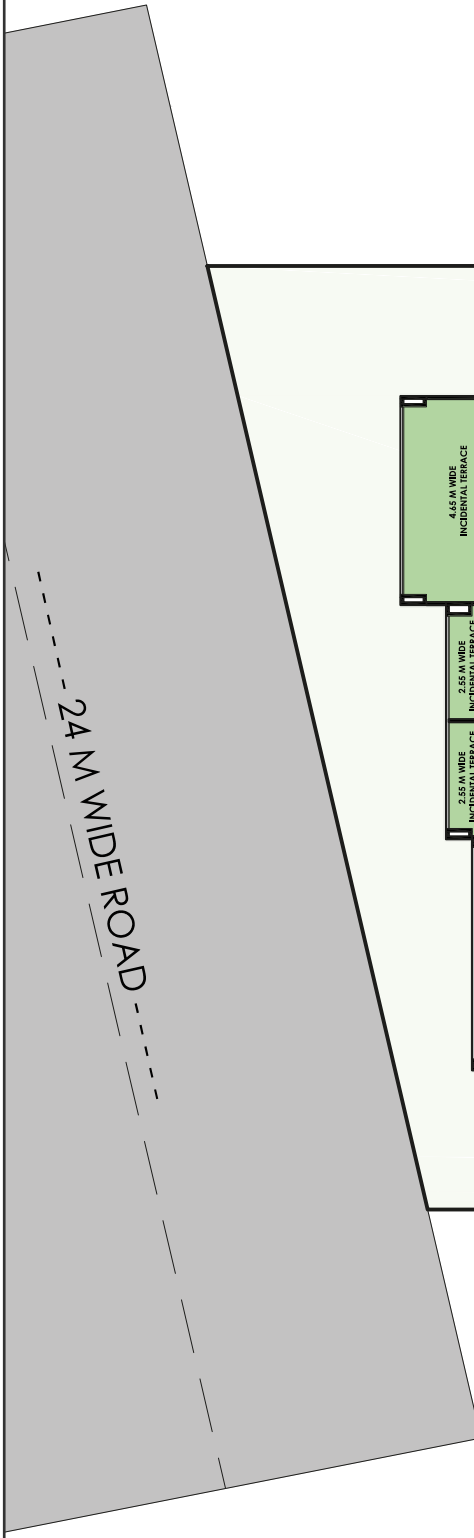
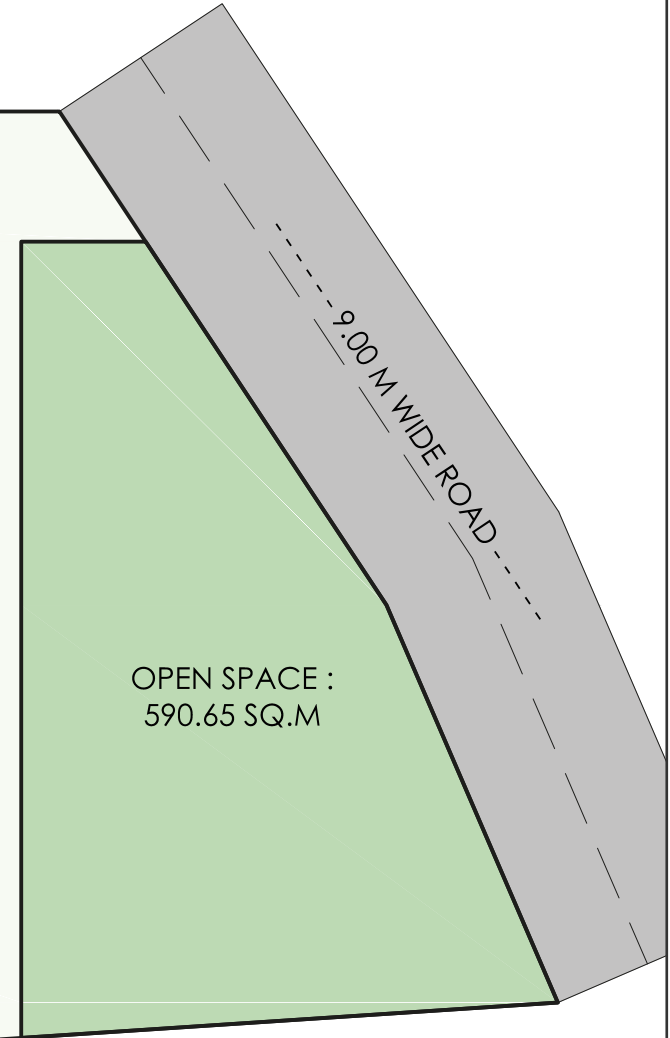
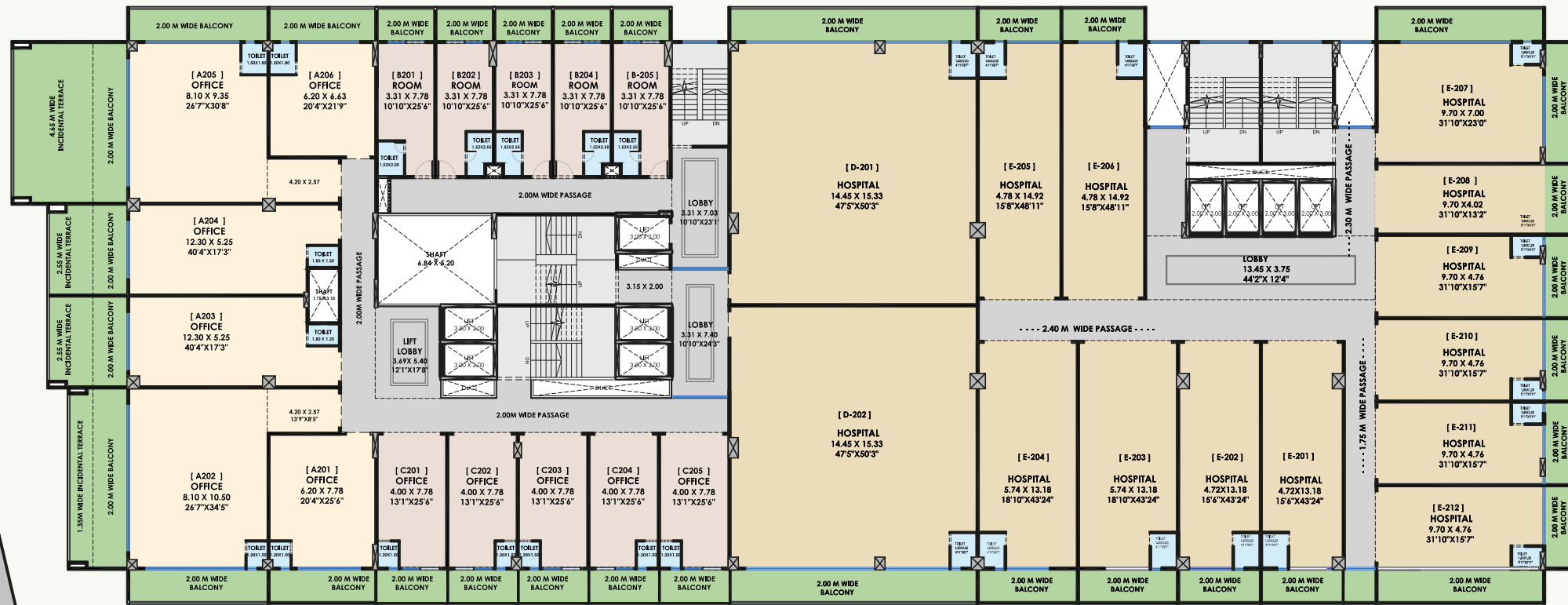
24 M WIDE ROAD

9.00 M WIDE ROAD

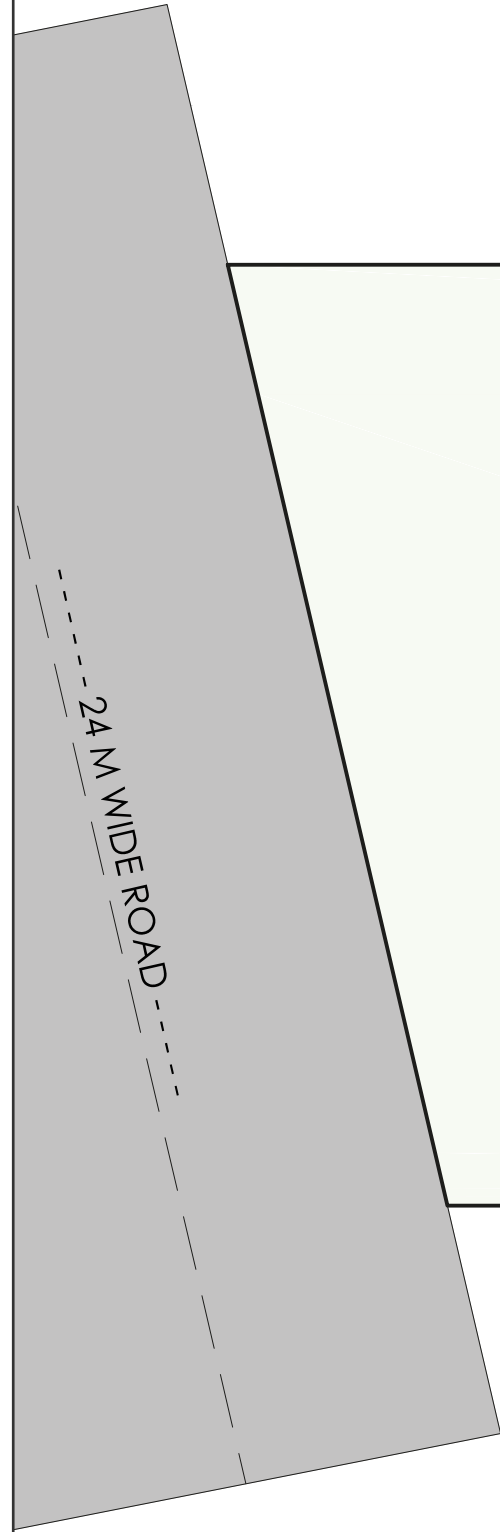
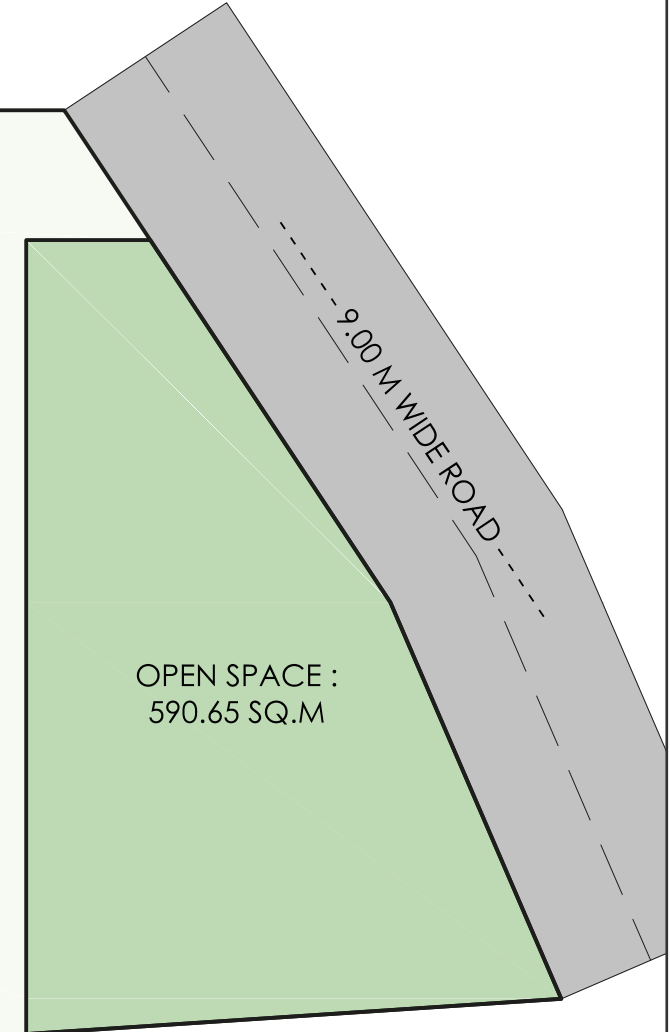
OPEN SPACE :  
590.65 SQ.M



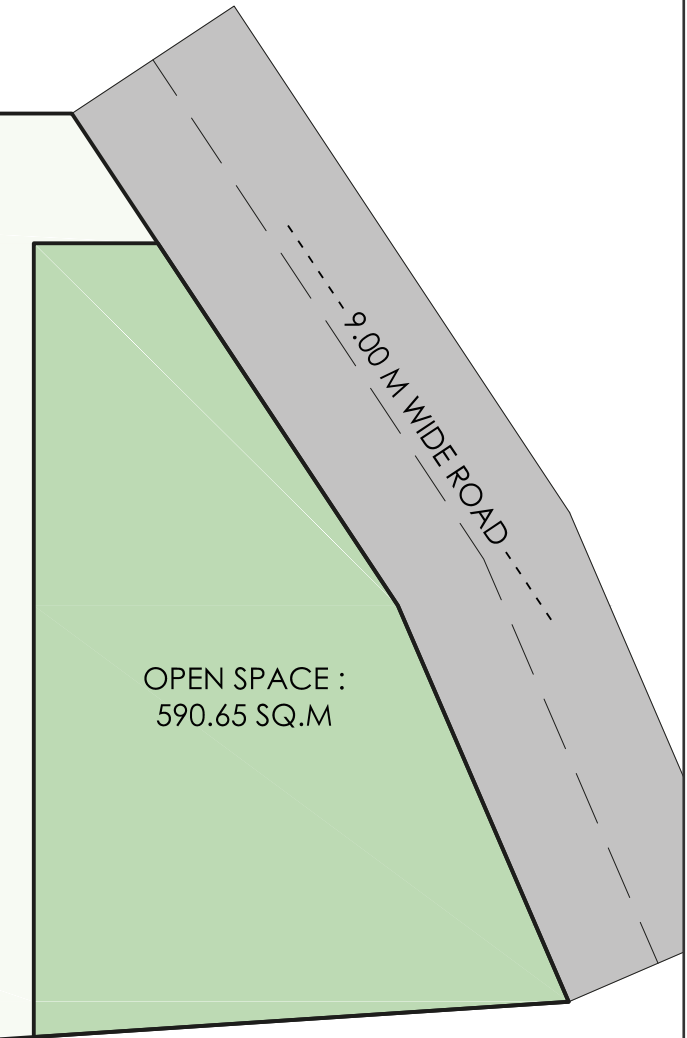
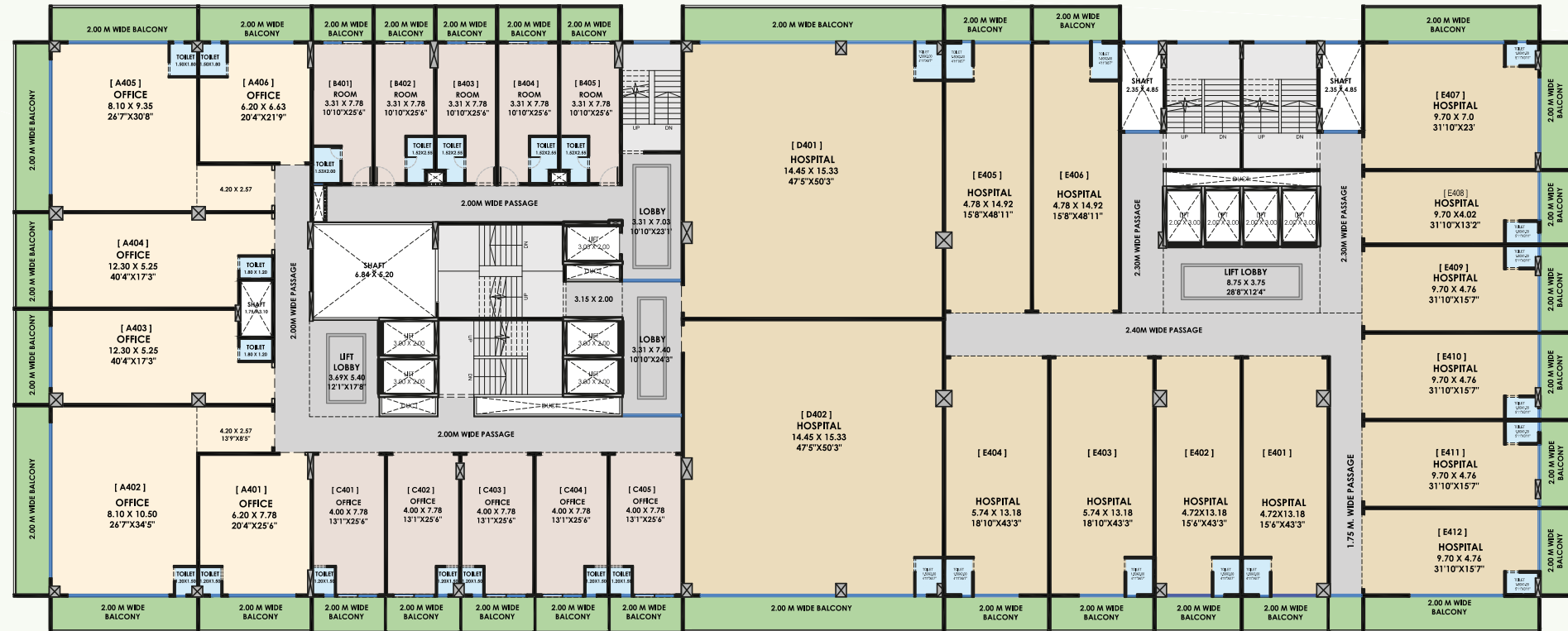
# 2<sup>nd</sup> Floor



# 3<sup>rd</sup> Floor

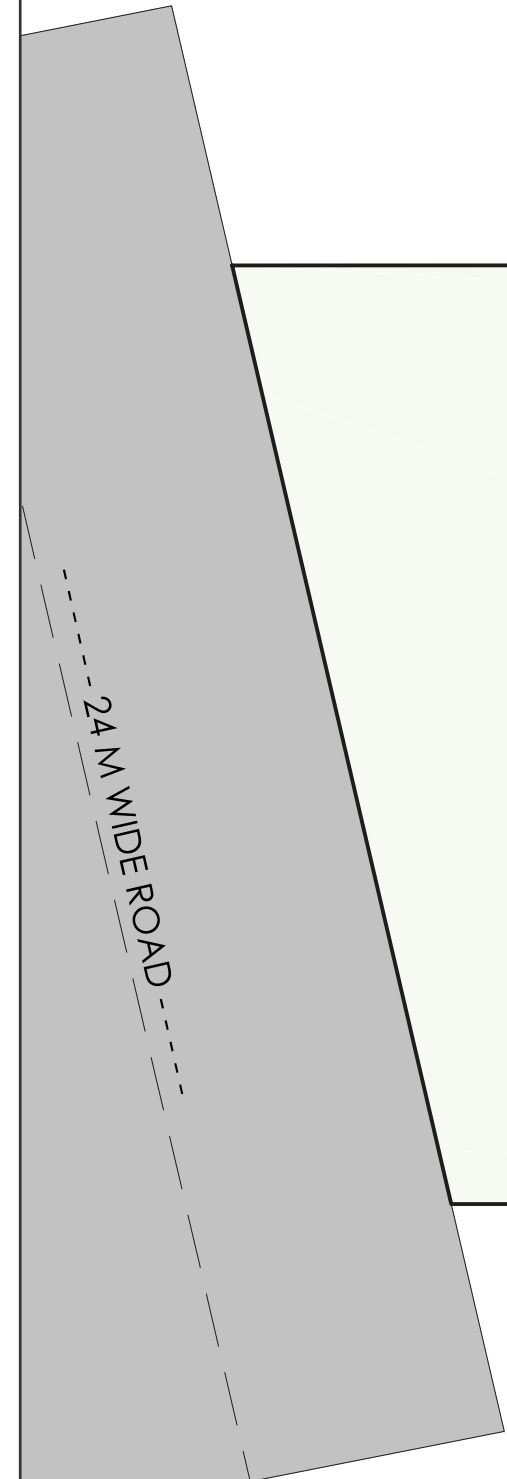
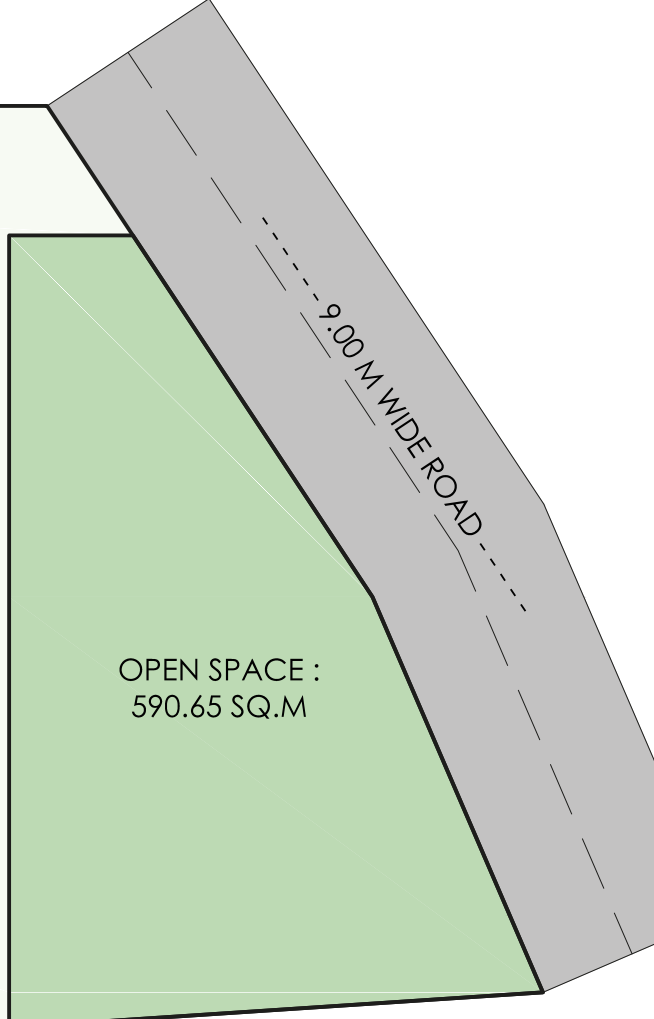
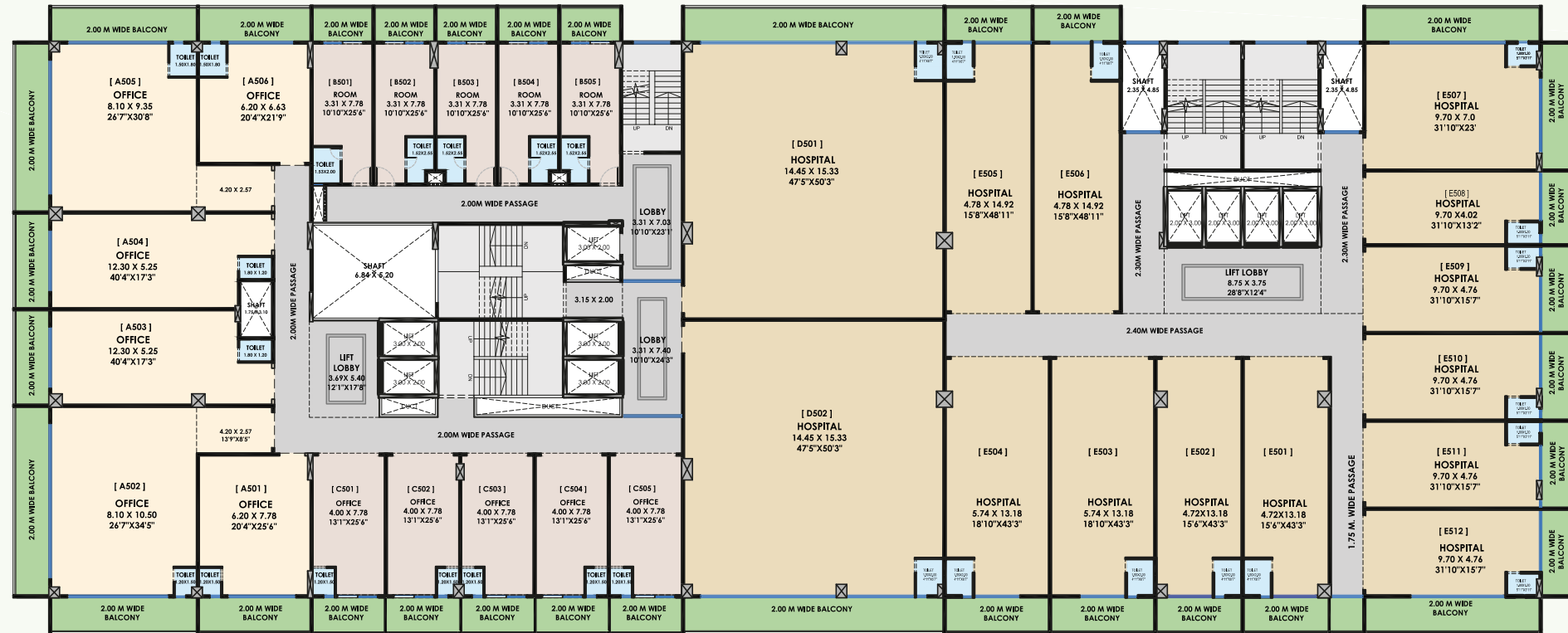


# 4<sup>th</sup> Floor

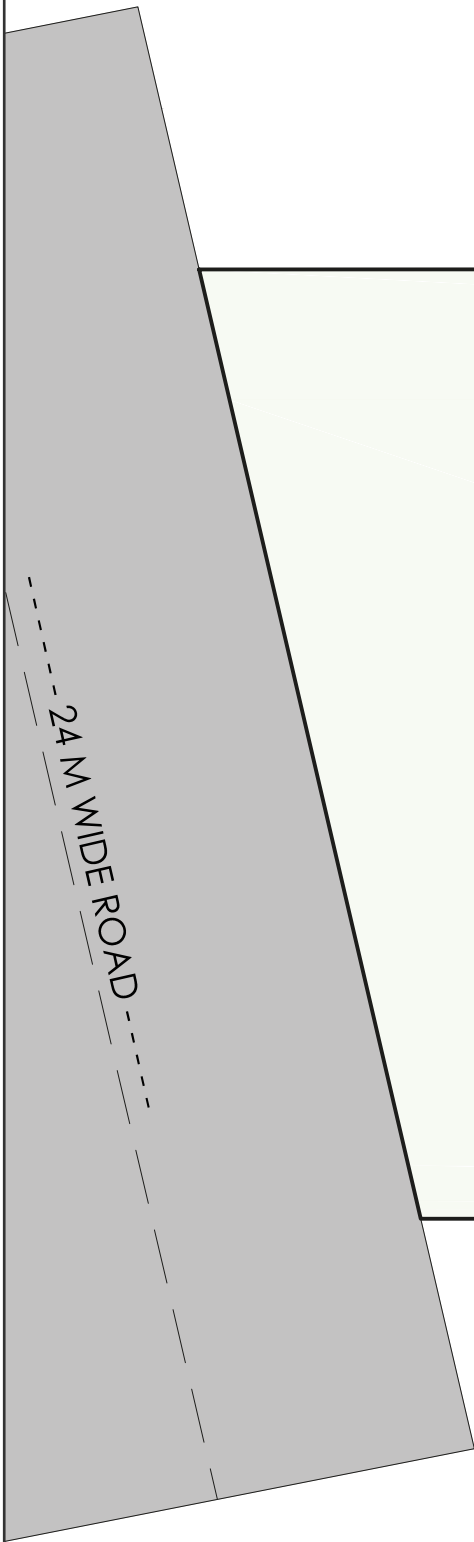
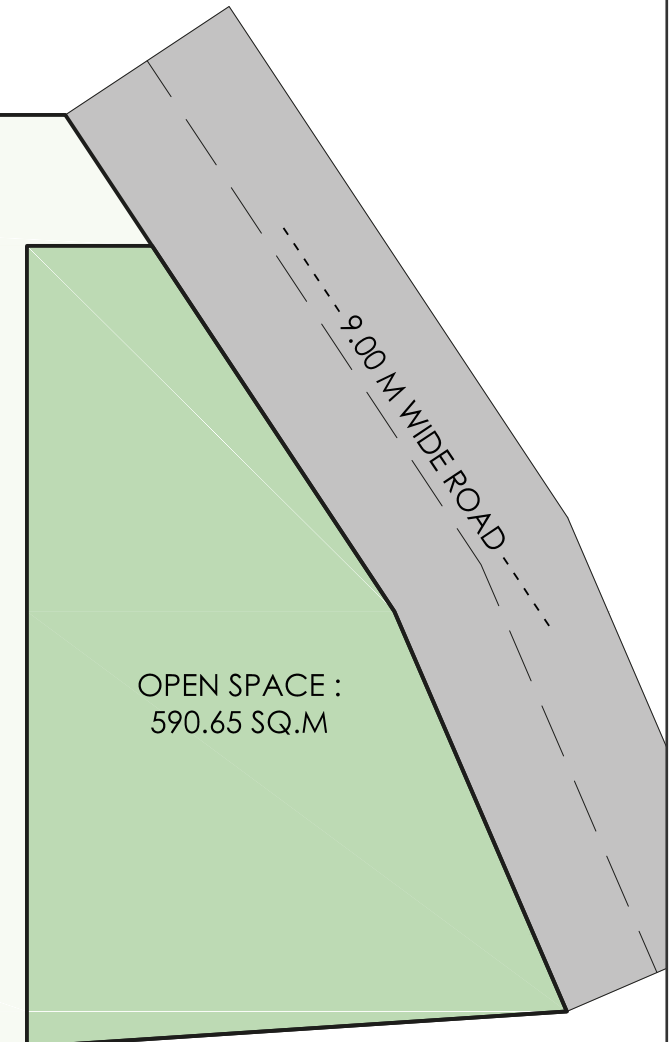
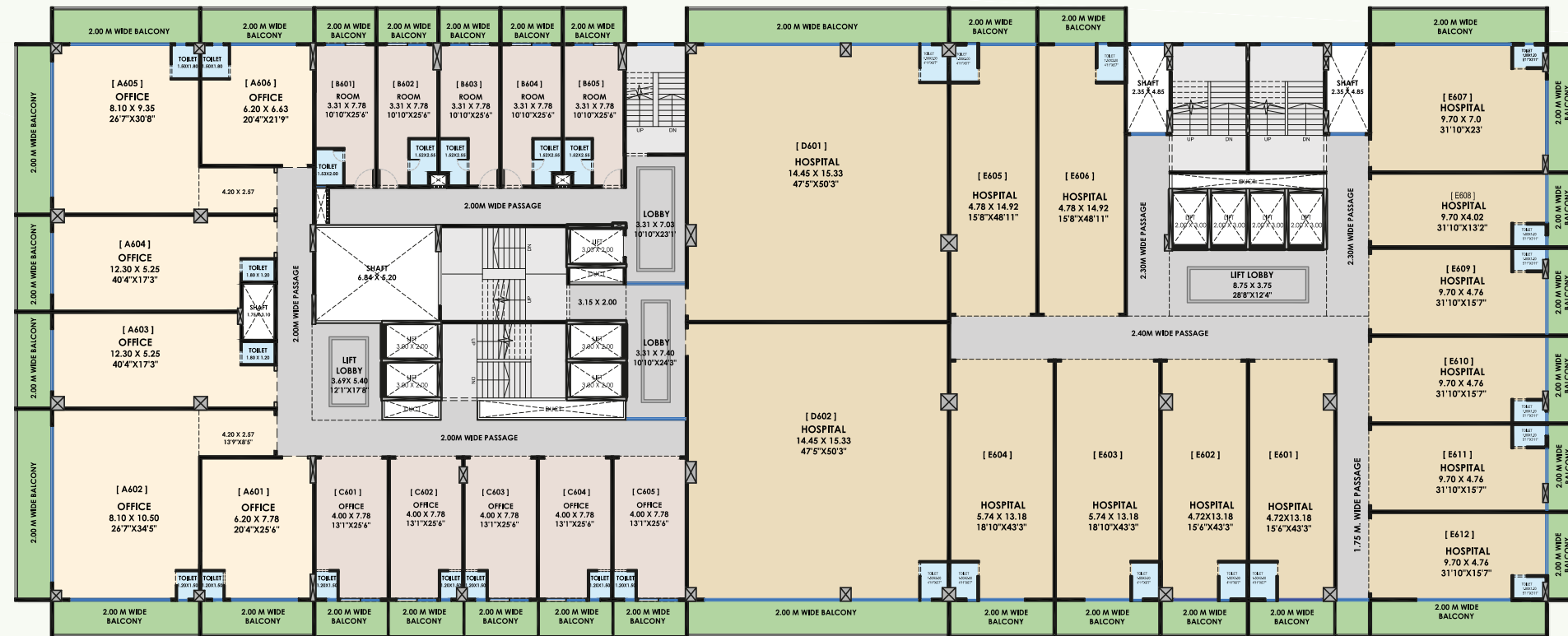




# 5<sup>th</sup> Floor



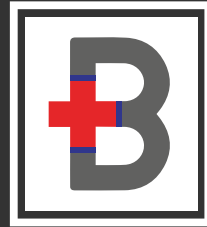
# 6<sup>th</sup> Floor



# PROJECT HIGHLIGHTS

| REQUIREMENT  | OUR OFFERINGS   | BUSINESS PLUS |
|--|---|---------------|
|  STEEL                    | POLAD - FE 500D GRADE   | ✓             |
|  CONCRETE                 | M40 GRADE / M35   | ✓             |
|  BRICK WORK               | AAC BLOCK WORK  | ✓             |
|  PLASTER WORK             | EXTERNAL : DOUBLE COAT PLASTER<br>INTERNAL : BUILDON GYPSUM PLASTER                 | ✓             |
|  SLAB THICKNESS           | 1 FOOT ( PT SLAB)   | ✓             |
|  SLAB TO SLAB TOP HEIGHT | 11 FEET (3.30 METER)  | ✓             |
|  TILE WORK              | 2*2 VITRIFIED STANDARD QUALITY  | ✓             |
|  LIFTS                  | 09 STANDARD STRETCHER SIZE LIFTS WITH BATTERY BACK UP SYSTEM                        | ✓             |
|  WINDOWS                | ALUMINIUM POWDER COATED 3-TRACK   | ✓             |
|  OPENING TYPES          | SAFETY SHUTTERS FOR SHOPS & SHOWROOMS   | ✓             |
|  SURVEILLANCE SYSTEM    | CCTV ENABLED AT ALL COMMON PREMISES   | ✓             |
|  NABH ACCREDITATION     | NATIONAL ACCREDITATION BOARD FOR HOSPITALS & HEALTHCARE PROVIDERS (NABH) - APPROVED | ✓             |
|  3 FLOOR PARKING'       | BASEMENT, GROUND & PODIUM   | ✓             |

| REQUIREMENT  | OUR OFFERINGS  | BUSINESS PLUS |
|--|--|---------------|
|  360° VENTILATION | FOR NATURAL FRESH AIR & LIGHTS   | ✓             |
|  RERA REGISTERED  | RERA NUMBER : P51600024000   | ✓             |
|  TDR & LOADING    | TDR PURCHASED & LOADED IN NMC PLAN   | ✓             |
|  TOILET           | FULLY FURNISHED TOILETS WITH WATER PROOFING  | ✓             |
|  ELECTRIC         | MAIN SUPPLY IN THE SHOP (NO WIRING)  | ✓             |
|  STAIRCASE       | STAIRCASE WIDTH 2M. AS PER HOSPITAL NORMS  | ✓             |
|  ENTRANCE LOBBY | GRAND ENTRANCE LOBBY AT GROUND FLOOR & 4 LUXURY LOBBY  | ✓             |
|  FIRE FIGHTING  | FIRE FIGHTING WITH SPRINKLER SYSTEM  | ✓             |
|  STP            | TWO SEPARATE STP: (I) ONE STP FOR SHOPS & OFFICES (II) ANOTHER FOR HOSPITALS                         | ✓             |
|  WATER TANK     | TWO SEPARATE WATER HEAD: (I) FOR SHOPS/OFFICES (II) FOR HOSPITAL/CLINICS BOTH UNDERGROUND & OVERHEAD | ✓             |
|  PAINT WORK     | DOUBLE COAT (BOTH INTERNAL & EXTERNAL)   | ✓             |
|  VASTU          | VASTU CONSULTED PREMISES   | ✓             |



**BUSINESS PLUS**  
The Plus Side Of Business!



## Get Connected!

Be an integral part of Nashik's concentrated futuristic community offering unparalleled opportunities.

A Project by



FOR BOOKINGS :  
**96737 99990 | 88888 88061**

MahaRERA Number : P51600024000

Visit Us : Next to Sai Square, Mumbai Naka, Nashik - 422002

businessplus.nasik@gmail.com | www.mangoestate.in   